

The Population Health Revolution:

Empowering Older Adults at Home With Smart Technology in Post Acute Care

OneStep



Presenters:



Patrick Tarnowski, PT, MBA

Chief Commercial Officer,
OneStep Digital Physical Therapy



William Dieter, PT, DPT, GCS, FSOAE

Senior Director of Clinical Services,
FOX Rehabilitation

Leveraging Technology to

Improve access for patients, referral partners,
and more acute levels of care

Offer comprehensive care — driving better
outcomes within value-based care

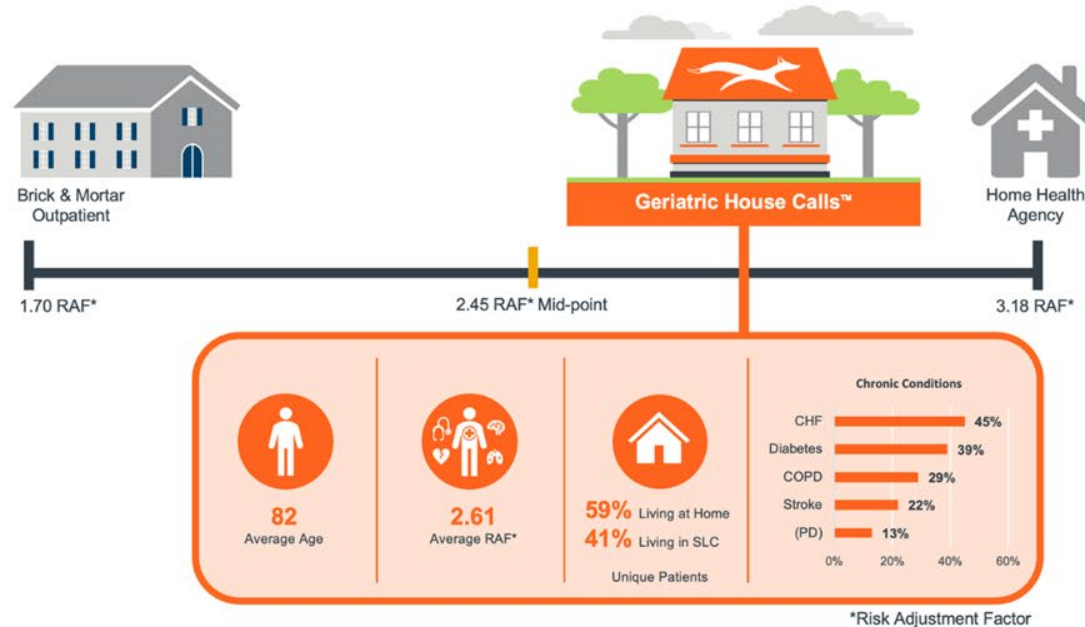
Enhance operational capacity

Continue our culture of innovation

Combatting Key Industry Problems

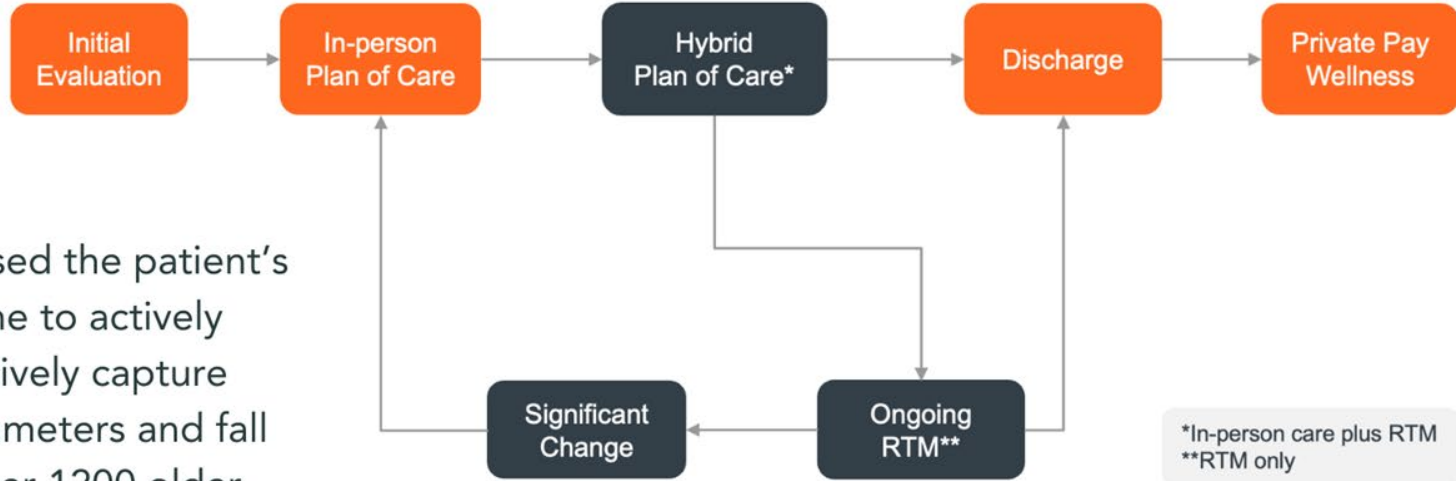
- Access to care
- Staffing
- Productivity
- Adopting novel technology into existing workflows
- Choosing solutions that deliver value to multiple settings within an organization

FOX Geriatric House Calls™ Model



Physical, occupational and speech therapy in the home for those that don't fit into the traditional post-acute models

FOX Geriatric House Calls™ Model Powered By Remote Therapeutic Monitoring (RTM)



We've used the patient's cell phone to actively and passively capture gait parameters and fall risk in over 1200 older adult patients

RTM Impact So Far

Patient Conversion

5% of patients in their homes

40-70% of Senior Living residents

Patient Engagement

3.5 x per week in their home

5 x per week in Senior Living

Falls

45% reduction in falls for Senior Living residents

Utilization

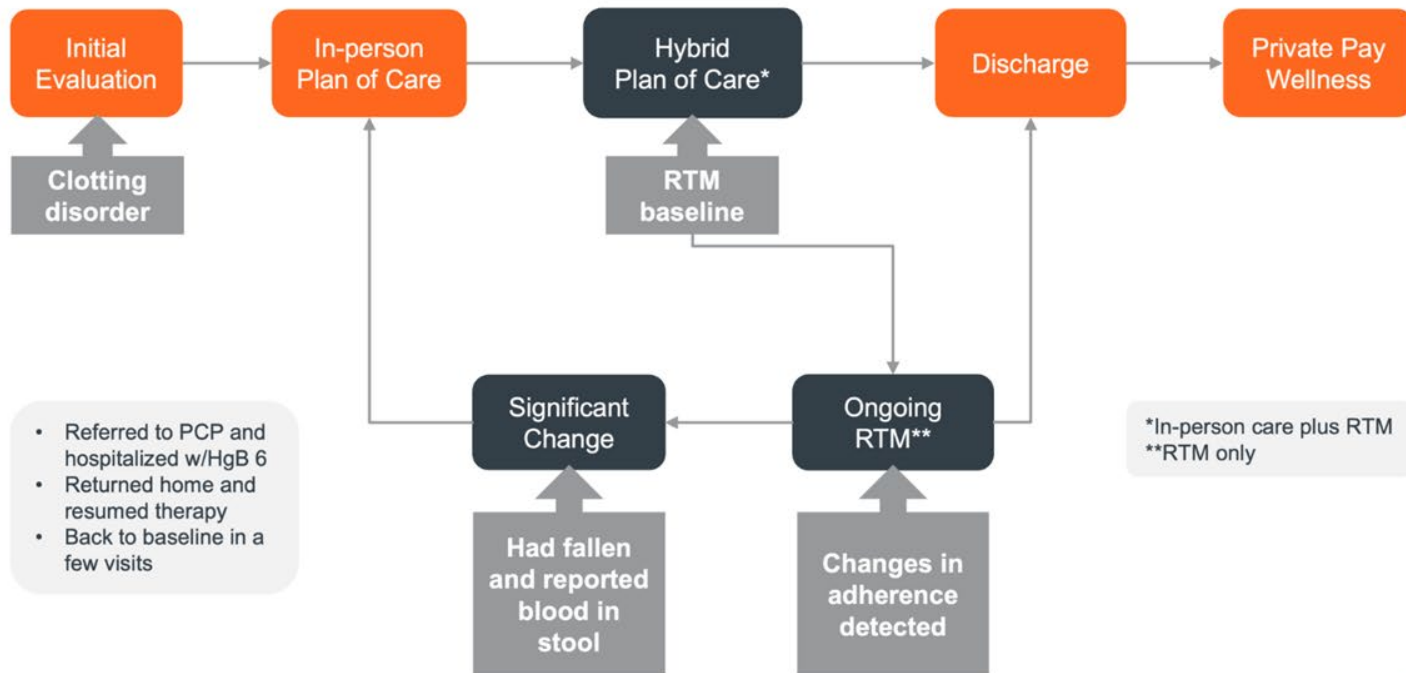


Less therapy recidivism

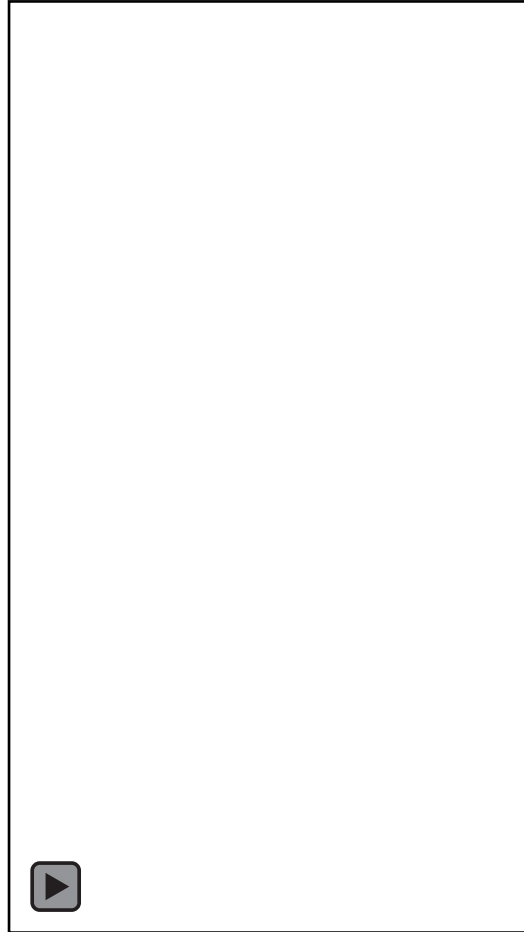
Functional Outcomes

58% Improvement on Patient Specific Functional Scale

The Story of Michael



Monitoring objective mobility with OneStep



Quickly Identify the Patients Needing Attention

The screenshot displays the 'All Patients' dashboard in the OneStep application. The interface includes a sidebar with navigation options: Patients, HEP, Chats, Settings, and Help. The main content area shows a list of patients with columns for Name, Type of care, Payor, Fall risk, Walk Score, Protocol completion, and Care actions. Each patient entry includes a color-coded risk indicator (Very high, High, Medium, Low) and a series of five circular icons representing different mobility metrics (STS, TUG, FOF, Walk, Walk). Action buttons like 'Medical Necessity' and 'Intervene' are provided for each patient.

Name	Type of care	Payor	Fall risk	Walk Score	Protocol completion	Care actions
Sarah Baker 67 years old	Therapy	Med B	Very high	77	STS, TUG, FOF, Walk, Walk	Medical Necessity Patient has 4 walk indicators (2 new). Generate a progress note now.
John Michaels 72 years old	Therapy	Med A	High	62	STS, TUG, FOF, Walk, Walk	Intervene Patient seems to be walking slower than 2 weeks ago. View possible reasons and speak with patient.
Jessica Parker 59 years old	RNA	Med B	Medium	71	STS, TUG, FOF, Walk, Walk	Intervene Patient seems to be walking slower than 2 weeks ago. View possible reasons and speak with patient.
Homer Simpson 81 years old	Therapy	Med B	Low	92	STS, TUG, FOF, Walk, Walk	Medical Necessity Patient has shown stable improvement. Consider discharge and Generate progress note now.

The Story of Betty

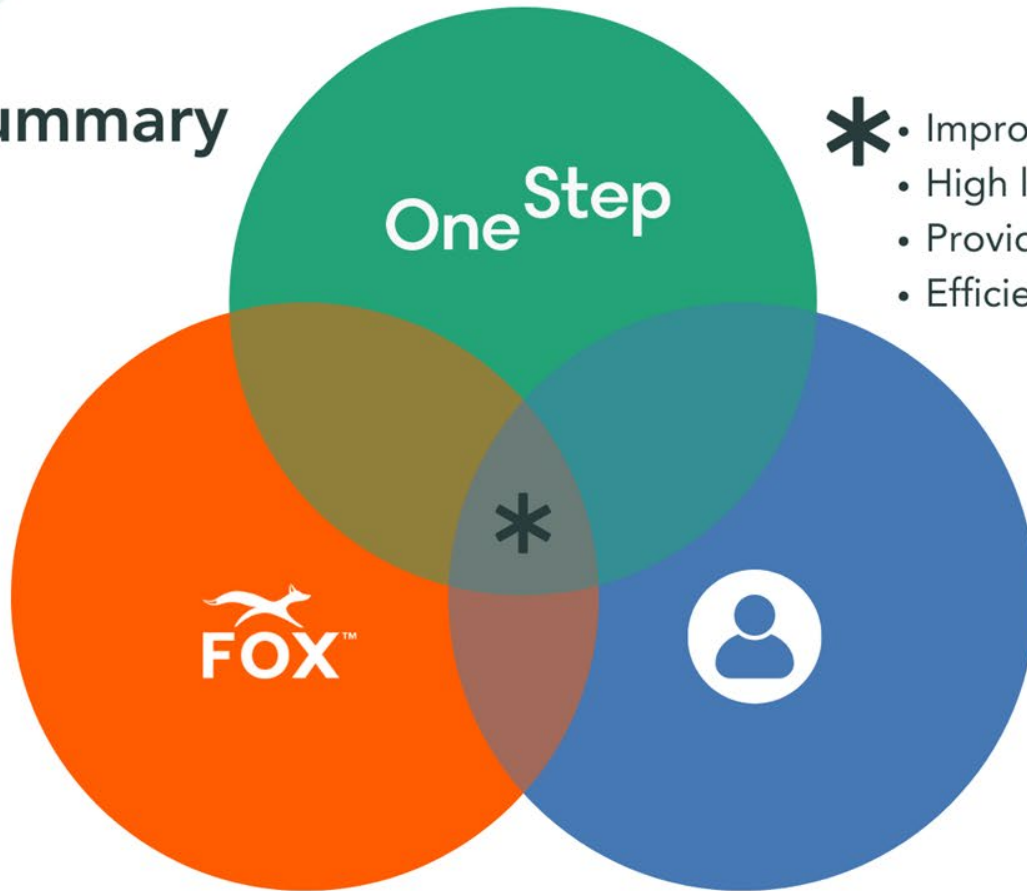


Decrease in patient's gait speed after death of best friend



Increase in patient's gait speed after PT intervention and communication

Summary



- * • Improved access to care
- High levels of patient engagement
- Provider satisfaction
- Efficient and effective outcomes

Thank you.

OneStep

